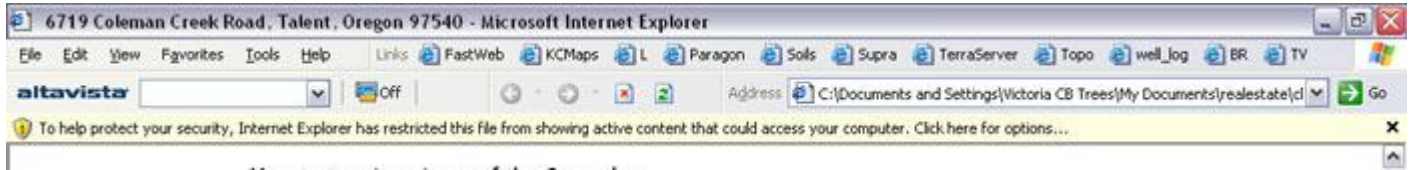


If you aren't able to view larger images of pictures, or even access the IDX Search pages, this means your Internet Explorer window is blocking either the windows themselves, or the script that makes the windows pop up. If your window looks sort of like this...



... with the "To help protect your security, Internet Explorer has restricted..." you will need to click on that bar. Then click on Allow Blocked Content.

The blocked content is nothing more than a simple script to open another window or larger image. It will not trace you, send you email, or do any damage to your computer.

If after unblocking the scripts and windows you are still having difficulty using my site, please let me know!

Thanks!

Victoria CB Trees